



Record Start Date

Mag. Thomas Griesmayer

Problem

- The sales of our customers are loaded into the DWH.

Customer_ID	Channel	Recipient_ID	Sales_Date
012302	I	012302	2017-02-15
123321	I	123321	2017-01-28
001230	S	999999	2017-02-12
324012	I	324012	2017-01-17
693442	S	693442	2017-01-13

- We still miss the customer information like name and address.
- We would like to store this information historically.

Operative Systems

Customer_ID	FirstName	LastName	ZIP	City
000001	Fritz	Müller	2700	Wr. Neustadt
000002	Marion	Mayer	2700	Wr. Neustadt
000004	Andrea	Maxen	1010	Wien
000005	Verena	Mayer	2700	Wr. Neustadt
000006	Maria	Müller	5020	Salzburg
000007	Anton	Tiroler	6020	Innsbruck

Where lived Fritz Müller before?

Who was customer 3?

What was her maiden name?

Operative Systems

- The old data is overwritten by the following Statements:
 - UPDATE
 - INSERT
 - DELETE
- In the dataware house it is important to see the historical changes.
- Sample:
 - How many customers are relocating very often?
 - Who married last year?

Datamodel

Operative System

Customer	
PK Customer_ID	INTEGER
FirstName	VARCHAR(30)
LastName	VARCHAR(30)
ZIP	CHAR(4)
City	VARCHAR(30)

Dataware house

Customer	
PK Customer_ID	INTEGER
PK Record_Start_Date	DATE
Record_End_Date	DATE
FirstName	VARCHAR(30)
LastName	VARCHAR(30)
ZIP	CHAR(4)
City	VARCHAR(30)

Operative Systems

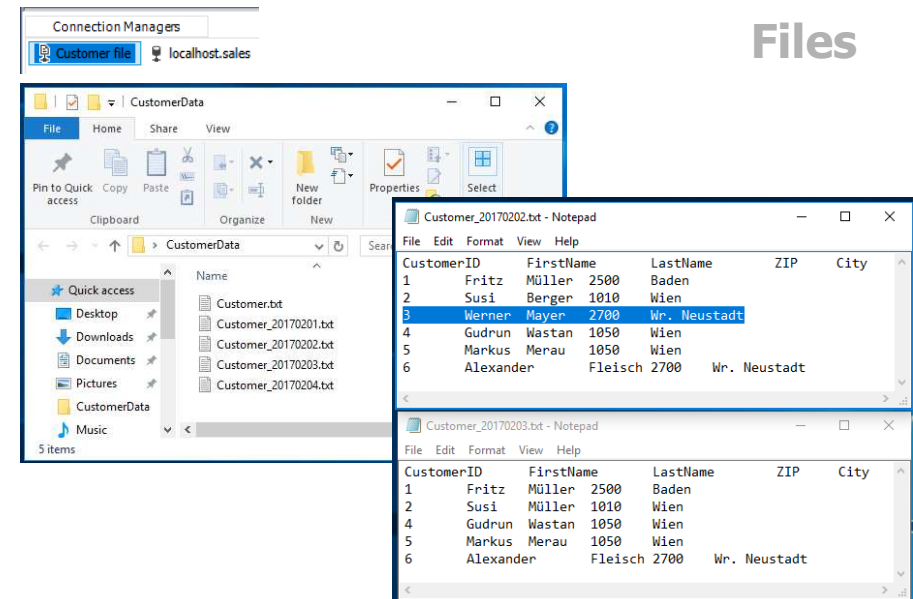
Customer_ID	FirstName	LastName	ZIP	City
000001	Fritz	Müller	2700	Wr. Neustadt
000002	Marion	Mayer	2700	Wr. Neustadt
000004	Andrea	Maxen	1010	Wien
000005	Verena	Mayer	2700	Wr. Neustadt
000006	Maria	Müller	5020	Salzburg
000007	Anton	Tiroler	6020	Innsbruck

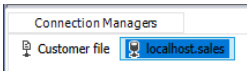
~~NEXT BOARD!!~~

Dataware house

C_ID	RSD	RED	FirstN	LastN	ZIP	City
000001	20170101	20170209	Fritz	Müller	2500	Baden
000001	20170210	99991231	Fritz	Müller	2700	Wr. Neustadt
000002	20170105	99991231	Marion	Mayer	2700	Wr. Neustadt
000003	20170109	20170209	Hans	Berger	1010	Wien
000004	20170203	20170209	Andrea	Maxen	1050	Wien
000004	20170210	99991231	Andrea	Maxen	1010	Wien
000005	20170205	99991231	Verena	Mayer	2700	Wr. Neustadt
000006	20170210	20170210	Maria	Hansen	5020	Salzburg
000006	20170211	99991231	Maria	Müller	5020	Salzburg
000007	20170210	99991231	Anton	Tiroler	6020	Innsbruck

Files





Tables

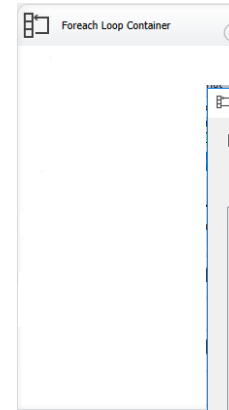
CUSTOMER_TMP	
File_Date	
CustomerID	
FirstName	
LastName	
ZIP	
City	

CUSTOMER	
CustomerID	
RecordStartDate	
RecordEndDate	
FirstName	
LastName	
ZIP	
City	

Mag. Thomas Griesmayer

8

For each



Foreach Loop Editor

The Foreach Loop container allows execution iteration over an enumeration.

General
Collection
Variable Mappings
Expressions

Foreach Loop Editor
Enumerator: **Foreach File Enumerator**
Expressions

Enumerator
Specifies the enumerator type.

Enumerator configuration
Folder: C:\Users\thomas\Desktop\CustomerData
Files: Customer_*.*

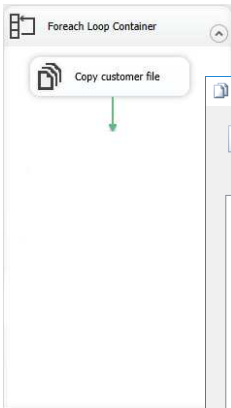
Foreach Loop Editor

The Foreach Loop container allows execution iteration over an enumeration.

General
Collection
Variable Mappings
Expressions

Select variables to map to the collection value.

Variable	Index
User::FILE_NAME	0



File System Task Editor

Configure the properties required to perform file system operations, such as creating, moving, or deleting files or directories.

General
Expressions

Destination Connection
IsDestinationPathVariable: False
DestinationConnection: Customer file
OverwriteDestination: True

General
Name: Copy customer file
Description: File System Task

Operation
Operation: Copy file

Source Connection
IsSourcePathVariable: True
SourceVariable: User::FILE_NAME

Name
Specifies the name of the task.

OK Cancel Help



Execute SQL Task Editor

Configure the properties required to run SQL statements and stored procedures using the selected connection.

General
Parameter Mapping
Result Set
Expressions

General
Name: Delete Customer_TMP
Description: Execute SQL Task

Options
TimeOut: 0
CodePage: 1252
TypeConversionMode: Allowed

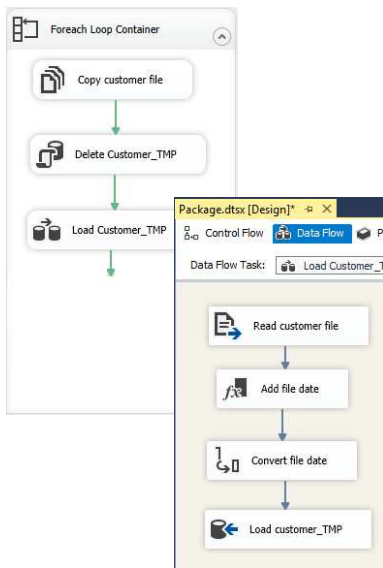
Result Set
ResultSet: None

SQL Statement
ConnectionType: OLE DB
Connection: localhost.sales
SQLSourceType: Direct input
SQLStatement: DELETE FROM SALES..[CUSTOMER_TMP]
IsQueryStoredProcedure: False
BypassPrepare: True

SQLStatement
Specifies the query to be run by the task.

Browse... Build Query... Parse Query

OK Cancel Help



Mag. Thomas Griesmayer

12

